

## BLS850 Laminating System

- An affordable and easy way to create laminated documents up to 8½" wide without heat or electricity
- Laminate documents in seconds
- Perfect for office use or industrial applications
- Small, portable desktop laminator works without electricity, heat or messy chemicals
- Economically priced Applications are endless



**No Heat!  
No Electricity!  
No Problem!**

### Features

- Three replaceable supply cartridge types (double-sided laminate, single-sided overlaminate, laminate with transfer adhesive)
- Integral cut-off blade at roller exit
- Laminates documents 8½" wide and up to 100' long
- Small, lightweight and portable
- Laminates with Brady's EXCLUSIVE industrial grade laminate!
- Brady's exclusive industrial grade overlaminate is constructed from tough polyester for durability even in harsh environments
- Significantly superior to typical polypropelene overlaminates in terms of outdoor performance and abrasion resistance

### BLS850 Laminating System

Description	Catalog Number
BLS850 Laminator	20585

### BLS850 Clear Overlaminates

Description	Supply Sizes	Catalog Number
Double-sided/Industrial use	8½" x 50' (21.8 cm x 15.2 m)	20589
Double-sided/Office use	8½" x 100' (21.8 cm x 30.5 m)	20602

\* Overlamine on one side, transfer adhesive on the other side.

### Use a BLS850 to finish:

- Signs
- Graphs
- ID Badges
- Maps
- Tags
- Procedures
- Labels
- Certificates
- ISO Documents
- Photos
- Wall Charts
- Phone Lists

Need to laminate documents wider than 8½"? See the BLS1255 on the previous page.

## Brady's Easy-to-Use BLS850 Laminator Covers it All



1. Select desired cartridge, insert a document and turn the handle.



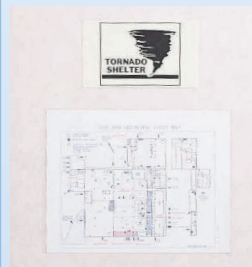
2. As it passes through the rollers, the adhesive and laminate are evenly applied.



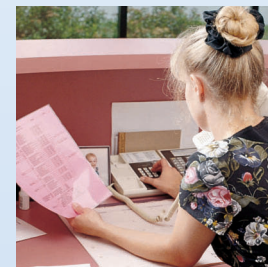
3. The cut-off blade provides a precise trim to finish documents.



Provides the perfect finishing touch for your Brady printer.



Laminator allows you to laminate one side of document while applying adhesive to reverse.



Laminate your most frequently reached for documents.